

ARRAY ELECTRONIC
TEXT
PANEL
SH Series



TEXT PANEL

- Considerate Design
 - • Remarkable Performance
 - • • Perfect Combination

SH SERIES

Features

Connectable PLC Devices

As the variety of PLC models, SH-300 not only can support our ARRAY PLC, but also can support PLC of many domestic and overseas brands. We can add the corresponding PLC protocol according to your requirements (including Mitsubishi FX series, Omron C series, Siemens S7-200 series, Panasonic FP series, Delta DVP series, ADC DL05 series, Schneider NEZA/TWIDO series, AB (AB-DF1 protocol) series, Emerson EC20 series, Hitachi MICRO-EH series, free protocol, MODBUS RTU/ASCII, RTU/ASCII EXTEND protocol, and TC-PRO48 Timercounter series etc..

Mitsubishi FX series

Panasonic FP series

and so on

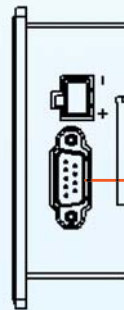
Siemens S7-200 series

Schneider
NEZA/TWIDO
series

and so on

Flexible Communication Interface

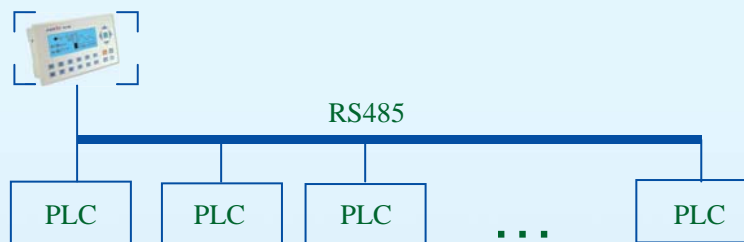
Selectable interfaces include RS232/RS422/RS485. The communication protocol will be downloaded into SH-300 display together with the displayed data, and there is no need to edit the communication program in PLC separately. The updated SH-300 program surpasses the old version apparently with its faster running speed, response speed, and refresh rate.



DB9 Male, supporting several kinds of interfaces.

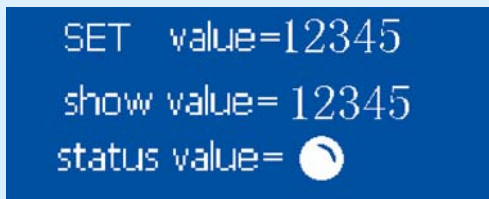
Communicating with Multiple PLC

SH-300 can support PLC of multipoint communication to realize 1: N communication. At most 256 sets PLC of same type can be connected to one SH-300, which depends on the maximum station number of corresponding PLC.



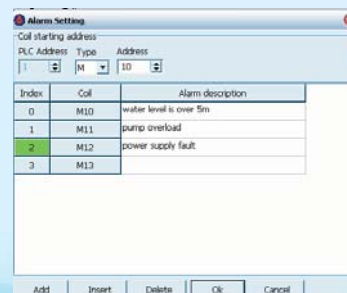
On-line Simulation Function

Use SH-300 to set the values of some registers, which makes it convenient to test the communication and function of controllers.



Alarm List Function

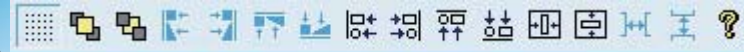
You can create and manage all alarming messages. When it is in accordance with the preset alarming condition, alarming message will be popped up. And it will be back to normal display when the alarming condition is eliminated.



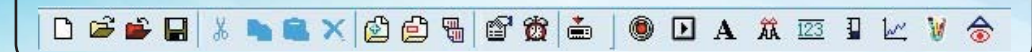
SH-300 Software

SH-300 Software

Distribution bar :
Aided edit tools enable you to distribute objects more efficiently, such as fast bottom alignment, top alignment, vertical alignment etc.



Tool bar :
Simple shortcut icons and various function lists enable you to do editing operation more easily, which includes static text, dynamic text, message display, data display/set, bar chart, indicator, function keys, trend chart and images.



Window description :
Description and distribution of display images enables you to know the usage of each display image more easily and clearly.

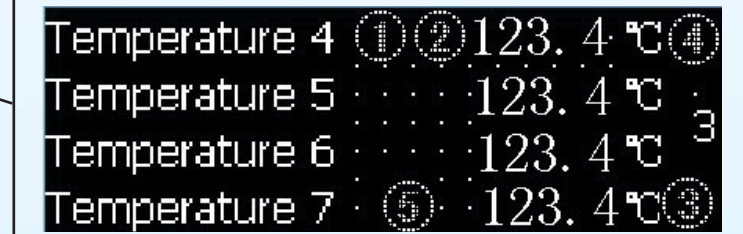
Scree...	Description
1	station 1
2	station 2
3	station 3
4	station 4
5	station 5

The screenshot shows the SH300 software interface. At the top, there's a menu bar with options: File(F), Edit(E), View(V), Screen(S), Object(O), Connect(C), Tool(T), Help(H). Below the menu is a toolbar with various icons. On the left, there's a 'Screen Editor' window with a table:

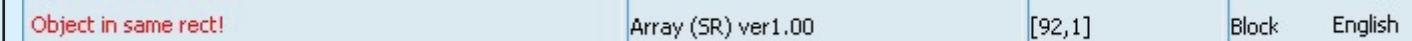
Scree...	Description
1	
2	jj
3	s
4	A
5	A

The main area shows a screen editor with a black background and white text. The text reads: "Temperature 4 123.4 °C", "Temperature 5 123.4 °C", "Temperature 6 123.4 °C", and "Temperature 7 123.4 °C". There are also some circled numbers (1, 2, 3, 4, 5) around the text. Below the screen editor is a 'Property[Screen]' window with fields for 'Screen NO.' (3), 'Screen Description' (s), and two dropdown menus for 'Pressing Up Arrow key, switch to screen NO.' (2) and 'Pressing Down Arrow key, switch to screen NO.' (4). At the bottom, there's a status bar with text: "Object in same rect!", "Array (SR) ver1.00", "[94,56]", "Block", and "English".

Edit section :
Edit the display image in this section to meet your requirements.



Status bar :
Prompt messages, such as software language, version, and object position etc.

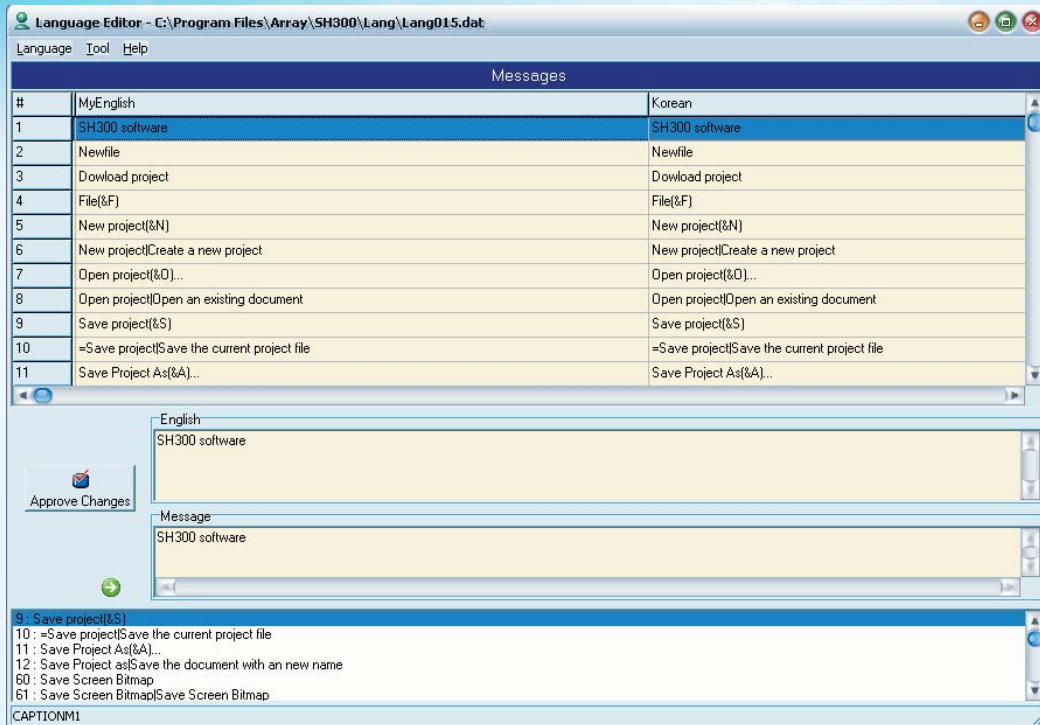


Basic requirements for SH-300 software	
Hardware/Software	Specifications
PC	Above Pentium III 500MH
Memory	Above 256MB
Hard disk	Above 400MB
Display	Above 800*600 resolution
Operating system	Windows2000/XP/VISTA

SH - 300 Software

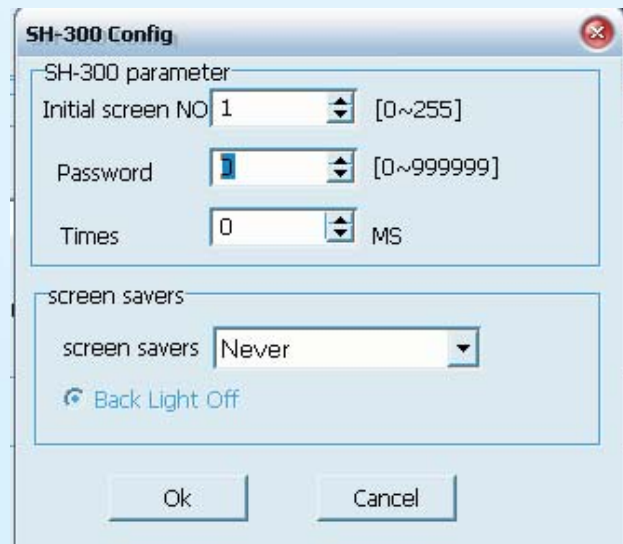
Multi Language Software Edit Interface

SH - 300 provides completely open multi language menu structure, which enables you to self - define menu easily and completely. You can choose Chinese, English, German, Japanese, Korean, Italian, Russian, Spanish, Swedish, Turkish, Dutch, French, and Hungarian Czech, etc.

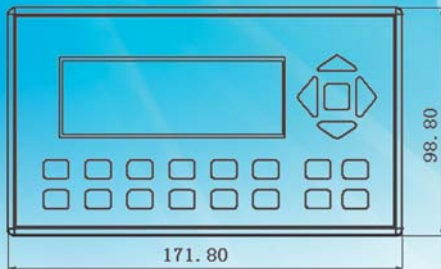


Password Protection

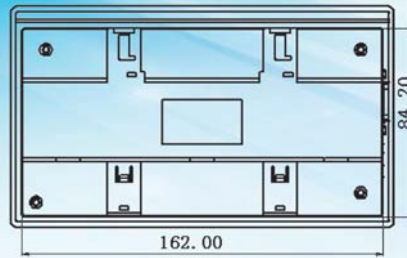
It is provided with two password - protected function: administrator`s (project file) password, and operator`s (operate SH - 300) password, which makes your application safer and free from illegal operation.



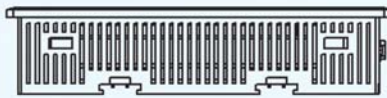
Dimensions & Installation



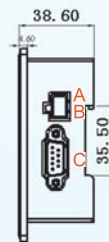
Front view (unit: mm)



Back view (unit: mm)



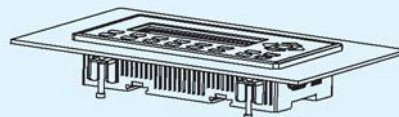
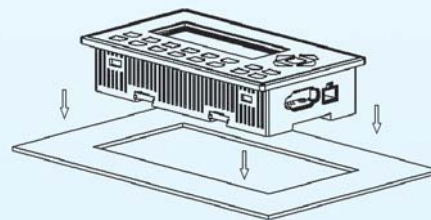
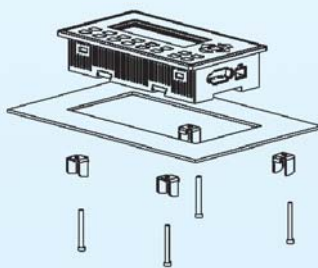
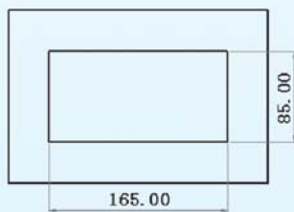
Direct-sight view



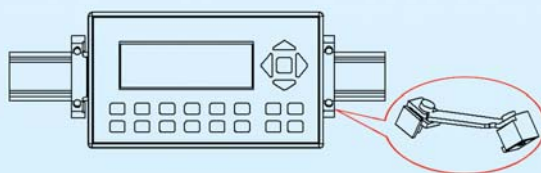
Right-side view (unit: mm)

- A - input terminal for negative pole of power supply
- B - input terminal for positive pole of power supply
- C - communication port (RS-232/RS-422/RS485)

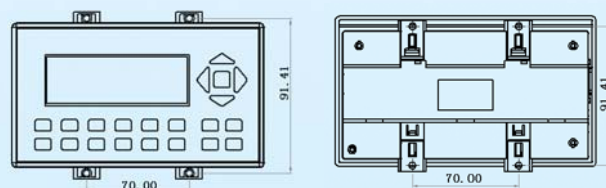
Embedded Installation



DIN Rail Installation



Screw Installation



The installation surface must be up to the Standard Type4, applicable to indoor use or the switchboard box with the same condition. Thickness of clapboard: 0.5-9.0mm. Dimensions of the installation holes are shown above.

Specifications

Hardware Specifications	
Display	4.3 " STN LCD display
Resolution	192 x 64 pixel
LCM life span	Over 50000 hours under the conditions of 25 ± 2 , $65 \pm 10\%$ RH
Brightness	60 cd/m ²
Color	Monochrome
Contrast	Adjustable resistor
Background light	Long life LED
Memory	110KB Flash ROM
Communication port	PC RS232& PLC RS485/422 & PLC RS232
Function key	14 self - definable keys
Allowable power disruption	Within 20ms
Overall dimensions	171.8 × 98.8 × 38.6mm
Display dimensions	96 × 32mm
Installation holes` dimensions	165 × 85mm
Cooling method	Natural air cooling
Weight	260g
Electrical Specifications	
Power supply	12 ~ 24VDC \pm 10% <300mA
Withstanding voltage	500VAC 1 minute (between signal and ground)
Insulation resistance	Over 10M ohm @ DC500V(between signal and GND)
Environmental Conditions	
Operating ambient temperature	- 10 ~ 60
Operating ambient humidity	20%RH ~ 90%RH (no condensation)
Storage temperature	-20 ~ 70
Anti - interference capacity	Voltage 1500Vp - p, pulse cycle 1us, duration: 1s
Vibration resistance	10~25Hz (X, Y, Z direction, 2G, 30 minutes)
Protection level	IP 65 (front panel)

Application Fields

SH-300 Text Panel enjoys wide applications, such as construction machinery, textile machinery, stone machinery, injection machine, shoe-making machine, printing machinery, packing machinery, foundry machinery, transportation machinery, ceramic machinery, zipper making machinery, numerical control machinery, and elevator etc.



**Intelligent Components
For
Your Applications**



*The whole
developmental
history of
mini automa-
tion products*

